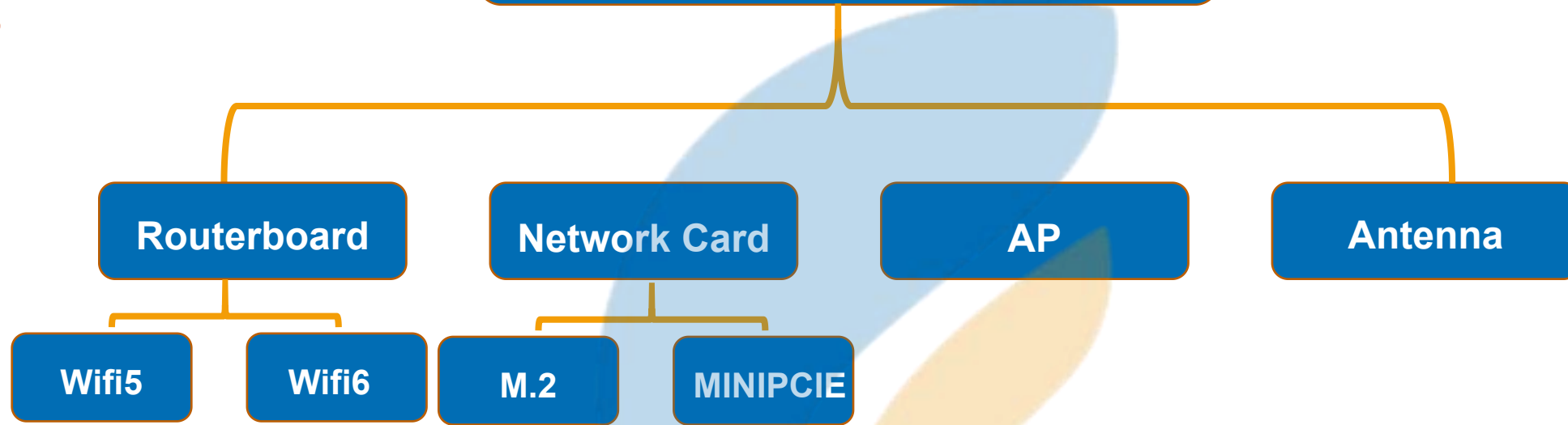




# Wallys Product List



Wallis has more than 15 years of research and development experience in linux, wifi protocol and other areas, Qualcomm chip development drivers, kernel and other important software development, modification and compilation, to meet customers' different wifi functional needs.

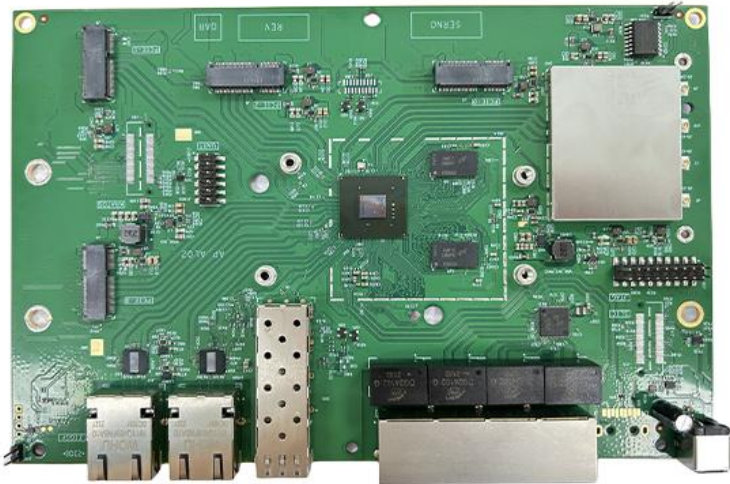
We focus on deep development of RU and OFDMA (WIFI6 technology) based on Qualcomm chips. On the basis of this technology, we developed TDMA, and our expertise extends to Qualcomm's RF technology. This knowledge enables us to have a strong understanding of the registers of the Qualcomm chip, which enables us to adjust the threshold of CSMA and optimize the selection algorithm of the modulation rate. As a result, we have achieved long distance transmission of 11ax 23km in the African market and developed numerous WiFi technologies.

We have a strong hardware design team, and experienced people know that the most difficult part of hardware design is RF circuit design, baseband, etc., while wallys team made 0 error to achieve signal integrity, such as frequency conversion of network card, from 2.4G to 900M, which is a technological breakthrough. **Support customized products.**

**Clients: TIP, Facebook, Openwrt, etc**

# Wifi7 routerboard-DR9574-Support QSDK

PCBA serials	Main chipset	Power supply	Memory	POE	Ethernet	2.4G	5G	Feature
DR9574	IPQ9574 IPQ6247	12V	1)2GB (2x1GB), DDR4 32-bit (2x16-bit) interface 2)PCI Express 3.0 Interface		2x10G +4x1G Ethernet Port	1)4x4 2.4G 11BE on board 2)support mu mimo	N/A	1)4 x M.2 E Key interface with PCIe 3.0 2)4x U.FL Connectors



WALLYYS

# Wifi6 routerboard-DR6018 serials-Support openwifi,QSDK,23km

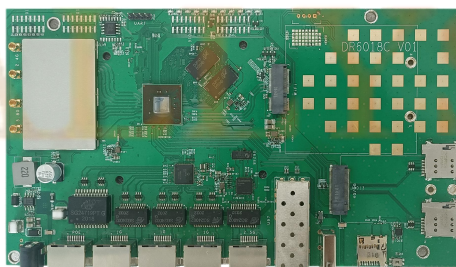
PCBA serials	Main chipset	Power supply	Memory	POE	Ethernet	2.4G	5G	Feature
DR6018	IPQ6010	24V~48VDC	1)Nor flash 8MB (support 8M~32MB) 2)Nand Flash 256MB (support 128M~512MB) 3)DDR3 512MB (support 512MB-1GB)	1)24V~48V passive POE 2)Active POE802.3af/at/bt (option)	1) 4x10/100/1000 Ethernet 2) 1x2.5 Ethernet (option)	1)2x2 11ax on board 2)support mu mimo 3)Up to 573 Mbps data rate 4) 27dbm @ MCS0 per chain	1)2x2 11ax On-board 2)support mu mimo 3)Up to1201 Mbps data rate 4) 27dbm @ MCS0 per chain	1)support 4G/LTE(M.2 B Key) 2)Support Wifi module(M.2 E Key) 3) 1x USB 2.0 Port
DR6018-s	IPQ6010	24V~48VDC	1)Nor flash 8MB (support 8M~32MB) 2)Nand Flash 256MB (support 128M~512MB) 3)DDR3 512MB (support 512MB-1GB)	1)24V~48V passive POE 2)Active POE 802.3af/at/bt (option)	1) 2x10/100/1000 Ethernet	1)2x2 11ax on board 2)support mu mimo 3)Up to 573 Mbps data rate 4) 27dbm @ MCS0 per chain	1)2x2 11ax On-board 2)support mu mimo 3)Up to1201 Mbps data rate 4) 27dbm @ MCS0 per chain	1)Support Wifi module(M.2 E Key) (option) 2) 1x USB 3.0 port(Option)
DR6018C	IPQ6010	24- 56VDC	1)Nor flash 8MB (support 8M~32MB) 2)Nand Flash 256MB (support 128M~512MB) 3)DDR3 512MB (support 512MB-1GB)	1)24V~48V passive POE 2)Active POE 802.3af/at/bt (option)	1) 4x10/100/1000 Ethernet 2)1x2.5G Ethernet	1)2x2 11ax on board 2)support mu mimo 3)Up to 573 Mbps data rate 4) 27dbm @ MCS0 per chain	1)2x2 11ax On-board 2)support mu mimo 3)Up to1201 Mbps data rate 4) 27dbm @ MCS0 per chain	1)support 4G/LTE(M.2 B Key) 2)Support Wifi module(M.2 E Key) 3) 1x USB 2.0 Port



DR6018



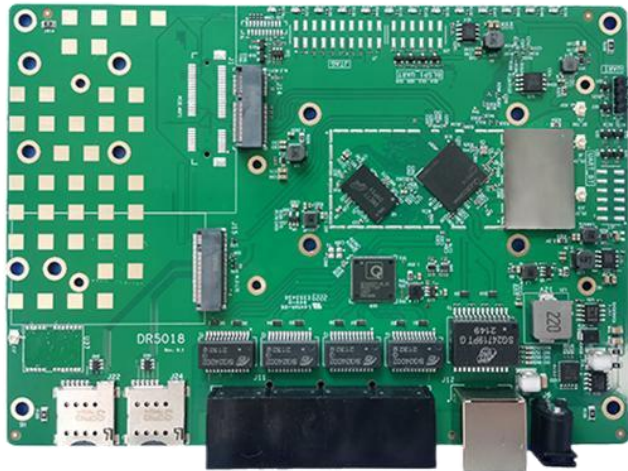
DR6018-S



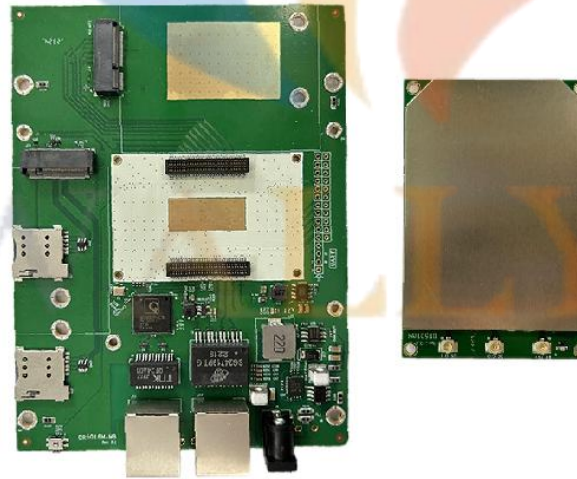
DR6018C

# Wifi6 routerboard

PCBA serials	Main chipset	Power supply	Memory	POE	Ethernet	2.4G	Feature
DR5018 <b>support openWiFi</b>	IPQ5018	12VDC	1) Nor Flash 8MB (support 8M~32MB) 2) Nand Flash 128 MB 3) DDR 512MB (support 512MB-1GB)	1)24V~48V passive POE 2)Active POE 802.3af/at/bt (option)	1) 5x10/100/1000 Ethernet	1)2x2 11ax on board 2)support mu mimo 3)Up to 573 Mbps data rate 4) 27dbm @ MCS0 per chain	1)support 4G/LTE(M.2 B Key) 2)Support Wifi module(M.2 E Key) 3) Bluetooth BT5.1
DR5018M <b>support openWiFi</b>	IPQ5018	24V-48V(DC Jack)	1) Nor Flash 8MB (support 8M~32MB) 2) Nand Flash 256 MB 3) DDR 512MB (support 512MB-1GB)	1)24V~48V passive POE 2)Active POE 802.3af/at/bt (option)	1) 5x10/100/1000 Ethernet	1)2x2 11ax on board 2)support mu mimo 3)Up to 573 Mbps data rate 4) 27dbm @ MCS0 per chain	1)support 4G/LTE(M.2 B Key) 2)Support Wifi module(M.2 E Key) 3) Bluetooth BT5.1



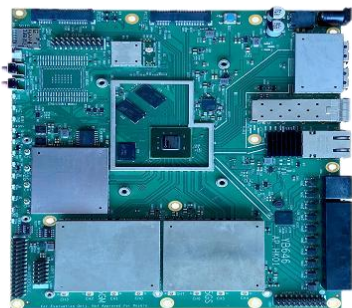
DR5018



DR5018M

# Wifi6 routerboard

PCBA serials	Main chipset	Power supply	Memory	POE	Ethernet	2.4G	5G	Feature
DR8074A(HK01)	DR8074A (HK01)	12VDC, 5A	1)NOR Flash: 32MB 2)NAND Flash: 256MB 3)eMMC: 8GB 4)DDR3:1GB	N/A	1)5x Gigabit Ethernet (1GbE) LAN/WAN RJ45 Port (Auto MDI- X) 2)1x 10Gigabit Ethernet (10GbE) LAN/WAN RJ45 Port (Auto MDI- X) 1x SFP+ Port	On-board 2.4GHz radio, up to On-board 1147Mbps physical data rate	On-board 5GHz radio, up to 4804Mbps physical data rate	1) 1x M.2 Slot 2) M.2 (NGFF) "B Key" Socket with PCIe 3.0 interface 3) 2x USB 3.0 Port 4) 1x Serial Port 12 Pin Connector 1x JTAG 20 Pin Connector 5) 1x micro SD Card Socket
DR8072	IPQ8072A	12VDC	1)Nor flash 8MB (support 8M~32MB) 2)Nand Flash 256MB (support 128M~512MB) 3)DDR3 1GB (support 1GB~2GB)	1)24V~48V passive POE 2)Active POE 802.3af/at/bt (option)	1) 4x10/100/1000 Ethernet 1)1x10G Ethernet(option)	1)4x4 11ax On-board 2.4GHz radio, 2)up to 1147Mbps physical data rate 3)24dbm @mcs0 perchain	1)4x4 11ax On-board 5GHz radio, 2)up to 2475 Mbps physical data rate 3)3)24dbm @mcs0 perchain	1) M.2 connector can support QCN9074 production 2) 2x USB 3.0 Port



DR8074A



DR8072 V01

LLYS

# Wifi5 routerboard-DR40X9-openwifi-openwrt-qsdk

PCBA serials	Main chipset	Power supply	Memory	POE	Ethernet	2.4G	5G	Feature	Others
DR40x9	IPQ4019 IPQ4029	12-56VDC	1)Nor Flash 2MB~32MB 2)Nand Flash 128MB 3)DDR 256MB~512MB	24V~48V passive POE	1) 2x 1Gbps Ethernet Ports 2) 1xSFP fiber module connector (optional)	Support 2.400GHz to 2.482GHz	Support 4.940GHz, 5.180GHz~5.8 2 5GHz Frequency Range	1) 1xminiPCIe 3G/4G connector support with two sim card 2)1xUSB 3.0 connector	CE,FCC,IC 1) support open WiFi 2) support QSDK 3)support openWRT
DR4019	IPQ4019	12VDC	1) Nor Flash 32MB 2)DDR 256MB	24V~48V passive POE	2x 1Gbps Ethernet Ports	Support 2.400GHz to 2.482GHz	Support 4.940GHz, 5.180GHz~5.8 2 5GHz Frequency Range		



DR40X9



DR4019S

# Indoor AP

	Routerboard	Antenna	POE	DC Jack	USB connector	Dimension
DR-AP40X9-A	DR40X9	2 x 2.4G&5G dipole Antennas 5dBi 2.4GHz/5Ghz SMA Plug interface	24V~48V passive POE	24V~48V power supply	1xUSB 3.0 connector	132x 119 x 34 mm
DR-AP6018-A	DR6018	2 x 2.4G&5G Antenna 5dBi 2.4GHz/5Ghz SMA Plug interface	24V~48V passive POE/Active POE(Support 802.3bt)	24V~48V power supply	1x USB 2.0 Port	192x 123 x 44 mm
DR-AP-6018-S-A	DR6018S	2 x 2.4G&5G Antenna 5dBi 2.4GHz/5Ghz SMA Plug interface	24V~48V passive POE/Active POE(Support 802.3bt)	24V~48V power supply	1x USB 3.0 Port(Optional)	133x 128 x 44 mm



DR-AP40X9-A



DR-AP6018-A



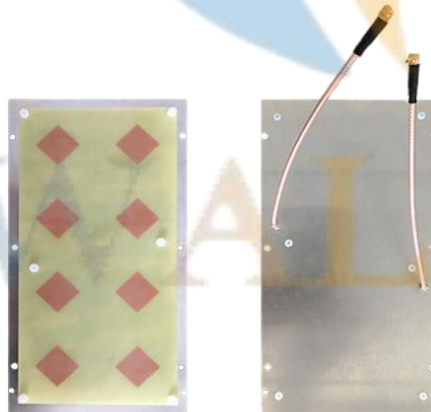
DR-AP-6018-S-A

# Outdoor AP

	routerboard	Panel Antenna	DRA25 Antenna	POE	DC Jack	Waterproof Level	Dimension
DR-AP40X9(OUTDOOR)	DR40X9	2 x 5G Antenna 5G: 17dbi	Frequency Range: 2.4~2.5&5.15~5.85GHz	24V~48V passive POE	24V~48V power supply	IP67	275x140x48mm
DR-AP4029-M	DR40x9	2 x 5G Antenna 5G: 17dbi	Frequency Range: 2.4~2.5&5.15~5.85GHz	24V~48V passive POE	24V~48V power supply	IP67	216x216x65mm
DR-AP6018S(OUTDOOR)	DR6018S	2 x 5G Antenna 5G: 17dbi	Frequency Range: 2.4~2.5&5.15~5.85GHz	24V~48V passive POE/Active POE(Suport 802.3bt)	24V~48V power supply	IP67	275x140x48mm



DR-AP40X9+DR-AP6018S



Panel Antenna



DRA25 Antenna



DR-AP4029-M

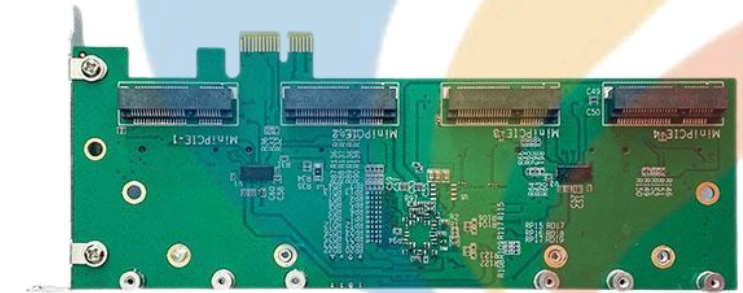


# Adapter Card

	Input voltage	Output Voltage	Features	ROHS Compliance	10/100/ 1000Mbps Gigabit Ethernet
DR3G11	12V	3.3V	Support 4pcs Mini PCIE cards or 4 pcs M.2 cards	YES	N/A
DR2G41	12V	3.3V	Support 1 pcs M.2 card Support AX200NGW Support DR9074-6E	YES	N/A
Surge Board	N/A	N/A	Support surge protection It is a module which is used to protect the Ethernet port (2.5Gbps or below ).	YES	2xRJ45 (one is for input, one is for output)



DR3G11



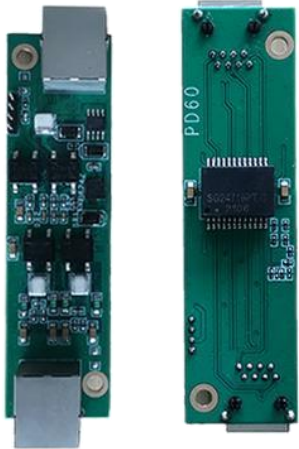
DR2G41



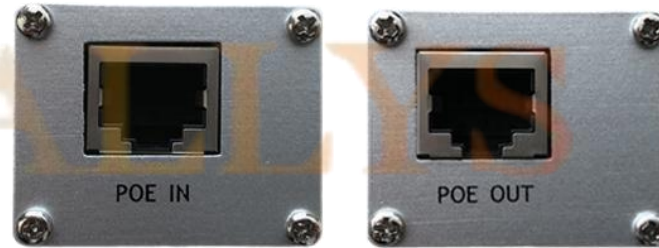
Surge Board

# PD module

PD module	Input voltage	Output Voltage	10/100/1000Mbps Gigabit Ethernet	others
PD60	42-56V	48-56V	2xRJ45 (one is for input, one is for output)	Support 802.3BT/AT/AF The efficiency is 98% Support surge protection
PD25	42-56V	48-56V	2xRJ45 (one is for input, one is for output)	Support 802.3BT/AT/AF The efficiency is 90% Support surge protection



PD60



PD25

# WiFi7 M.2 Card

	Main chipset	Power supply	2.4G	5G	6E	Special feature for RF
DR9274-DB	QCN6274 QCN9274	5VDC	1) <b>2x2 2.4GHz</b> MU-MIMO, up to 1376Mbps physical data rate; 2) 802.11b/g/n/ax/be, max 24dBm per chain	1) <b>2x2 5GHz</b> MU-MIMO, up to 1376Mbps physical data rate; 2) 802.11a/n/ax/be, max 21dBm per chain	N/A	Frequency Range : 2.4GHz: 2.412~2.472GHz 5GHz: 5.15~5.825GHz
DR9274-5G6G	QCN9274	5VDC	N/A	1) <b>2x2 5G</b> MU-MIMO, up to 8,647Mbps physical data rate; 2) Support up to 4096-QAM 3) 5GHz 802.11a/n/ax/be, max 22dBm per chain	1) <b>2x2 6G</b> MU-MIMO, up to 8,647Mbps physical data rate; 2) Support up to 4096-QAM 3) 5GHz 802.11a/n/ax/be, max 22dBm per chain	Frequency Range : 5GHz: 5.15~5.825GHz 6GHz: 5.925GHz~7.125GHz
DR9274-5G	QCN9274	5VDC	N/A	1) <b>4x 4 5G</b> MU-MIMO, up to 5765Mbps physical data rate; 2) 5GHz 802.11a/n/ax/be, max 22dBm per chain	N/A	Frequency Range : 5GHz: 5.15~5.825GHz
DR9274-6G	QCN9274	5VDC	N/A	N/A	1) <b>4x 4 6G</b> MU-MIMO, up to 11530Mbps physical data rate; 2) Maxim Tx power 22dBm per chain;	Frequency Range : 5.15GHz~5.85GHz Range : 5.925GHz~7.125GHz



WALLY'S

# WiFi6/6E M.2 Card

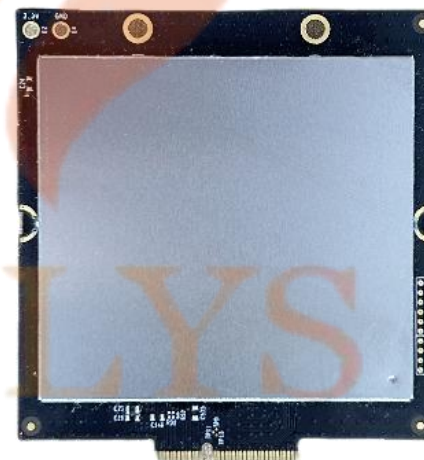
	Main chipset	Wifi	Power supply	2.4G	5G	6E	Special feature for RF
DR9074-5G(PN02.1)	QCN9074 QCN9024	wifi6	5VDC	N/A	1)23dBm per chain ,up to 4949Mbps 2)support 4x4 MIMO	N/A	Frequency Range :5.15GHz-5.85GHz
DR9074-6E(PN02.7)	QCN9074 QCN9024	wifi6	5VDC	N/A	1)23dBm per chain ,up to 4949Mbps 2)support 4x4 MIMO	6GHz, max 23dBm per chain, up to 4949Mbps	Frequency Range :5.925GHz~7.125GHz
DR9074-Triband	QCN9024	wifi6	5VDC	2.4GHz, max 23dBm per chain, up to 1147Mbps	1)23dBm per chain ,up to 4949Mbps 2)support 4x4 MIMO	6GHz, max 23dBm per chain, up to 4949Mbps	Frequency Range : 2.4GHz: 2.412~2.472GHz 5GHz: 5.15~5.825GHz 6GHz: 5.925GHz-7.125GHz



DR9074-5G



DR9074-6E



DR9074-Triband

# WiFi6/6E MINI PCIE Card

	Main chipset	Wifi	Power supply	2.4G	5G	6E	Special feature for RF
DR9074E-DB	QCN9074	wifi6	5VDC	2.4GHz, max 23dBm per chain, up to 1147Mbps	1)23dBm per chain ,up to 4949Mbps 2)support 4x4 MIMO	N/A	Frequency Range :5.15GHz-5.85GHz
DR9074E	QCN9074	wifi6	5VDC	N/A	1)23dBm per chain ,up to 4949Mbps 2)support 4x4 MIMO	6GHz, max 23dBm per chain, up to 4949Mbps	Frequency Range : 5.15GHz-5.85GHz Range :5.925GHz~7.125GHz
DR7915 <b>DBDC</b>	MT7915+ MT7975	wifi6 802.11ax	3.3VDC	1)2.4GHz max 23dBm 2)2.4GHz: 2.412GHz to2.472GHz	1) 5GHz max 20dBm output power 2) 5GHz: 5.180GHz to5.825GHz	Support 4.9G	



DR9074E



DR7915

WALLYYS

# WiFi5 Mini pcie Card

	Main chipset	Wifi	Power supply	2.4G	5G	Special feature for RF	Others
DR600vx	QCA9880	wifi5 802.11ac	3.3VDC	1) 24dbm@mcs0 2) -93dbm@mcs0 Rssi 3) support 2x2 MIMO	1) 22dbm@mcs0 2) -93dbm@mcs0 Rssi 3) support 2x2 MIMO	Support 4.9G	CE FCC
DR900vx	QCA9880	wifi5 802.11ac	3.3VDC	1) 24dbm@mcs0 2) -93dbm@mcs0 Rssi 3) support 2x2 MIMO	1) 22dbm@mcs0 2) -93dbm@mcs0 Rssi 3) support 2x2 MIMO	Support 4.9G	CE FCC IC
DR882	QCA9882	wifi5 802.11ac 802.11an	3.3VDC		1) 22dbm@mcs0 2) -93dbm@mcs0 Rssi 3) support 2x2 MIMO	Support 4.9G	FCC



# Antenna

	Wifi	Antenna Type	Special feature for RF	V.S.W.R	Gain (dBi) (peak)
DRA24126ESBE	Wi-Fi 6E Dipole Antenna	SMA Plug	2.4~2.5&5.15~7.15GHz of frequency	2.4-1.92max 5.85-2.1max	2.45GHz@3.0dBi 5.85GHz@4.0dBi
DRA2G5G5D001	dipole antenna, <b>5dBi</b>	SMA Plug	2.4~2.5GHz&5.15~5.85GHz	<2.0	2.4GHz@3.0dBi 5GHz@5.0dBi
DRA25	Wi-Fi 6E	N-type PLUG	2.4~2.5&5.15~5.85GHz	2.0 Max (≤2.0)	6±0.5dBi(peak)
DR24	wifi6 802.11ax	3.3VDC	Support 4.9G		3DBI/6DBI



DRA24126ESBE



DRA2G5G5D001



DRA25



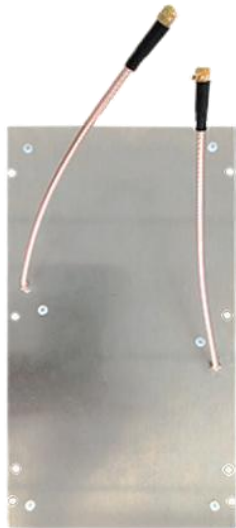
DR24

# Panel Antenna

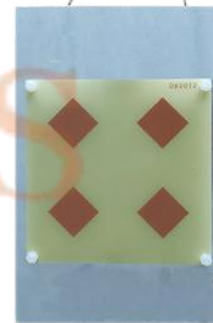
	Wifi	Antenna Type	Special feature for RF	V.S.W.R	Gain (dBi) (peak)
DR5G17	802.11ac/802.11ax	mmcxc connector	5.1GHz-5.9GHz of frequency	<1.85	5G 17dBi
DR5G15	802.11ac/802.11ax	mmcxc connector	5.1GHz-5.9GHz of frequency	<1.85	5G 15dBi
DR2G11	802.11ac/802.11ax	mmcxc connector	2.4GHz-2.482GHz of frequency	<1.85	2.4G 11dBi,



DR5G17



DR5G15



DR2G11